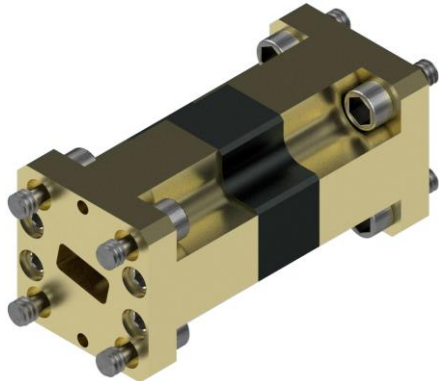


Model: FR280

Specifications

Flange	WR-28
Frequency (GHz)	26-40
Insertion Loss (dB, typ)	0.5
Insertion Loss (dB, max)	1
Isolation (dB, typ)	30
Isolation (dB, min)	23
Input Return Loss (dB, typ)	20
Output Return Loss (dB, typ)	20
VSWR (max)	1.4:1
Maximum Power (W)	4
Diamond Heatsink	Yes

Dimensions: 0.75 x 0.75 x 1.6 inch



FR280 - Simulation Data

