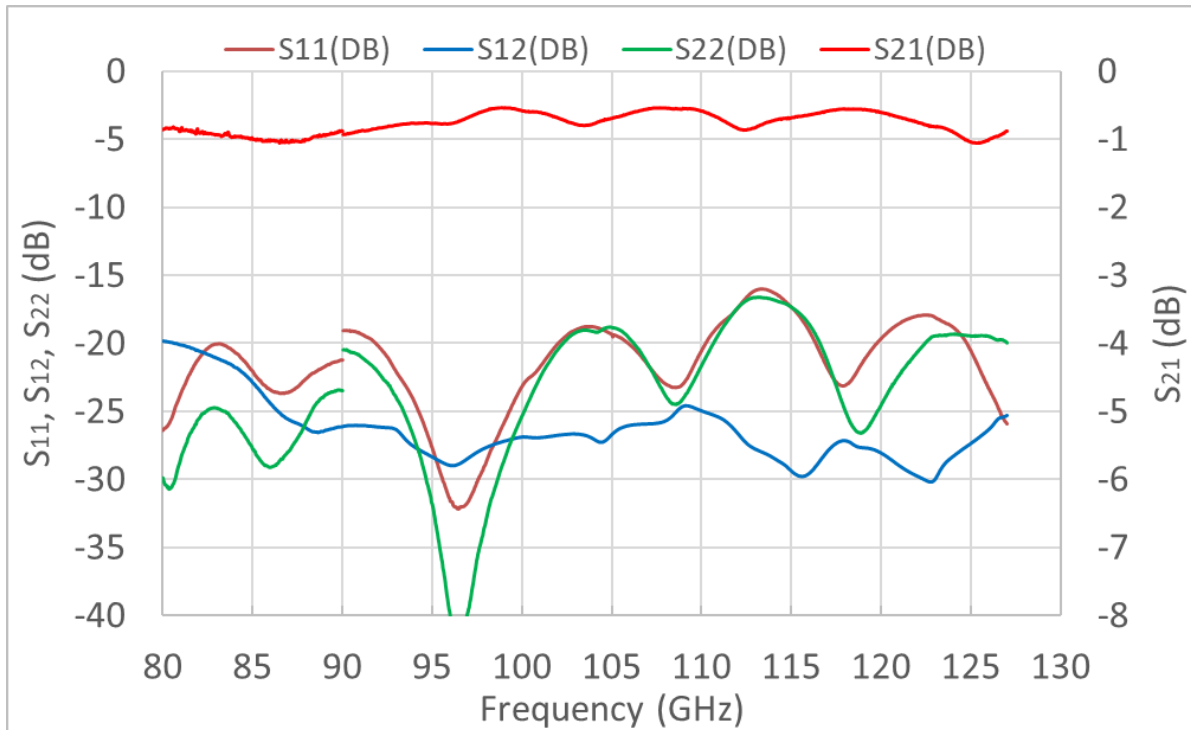
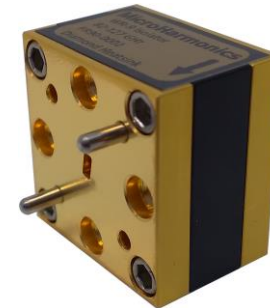
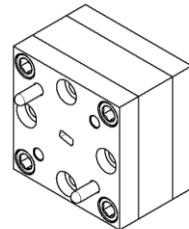
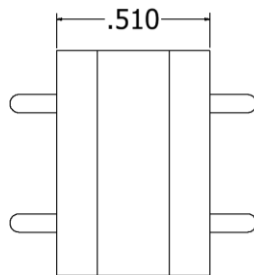
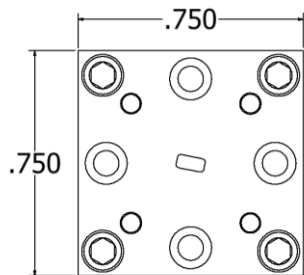


Model: FR90

Specifications

Flange	WR-9*
Frequency (GHz)	82-122
Insertion Loss (dB, typ)	1.0
Insertion Loss (dB, max)	1.8
Isolation (dB, typ)	24
Isolation (dB, min)	18
Input Return Loss (dB, typ)	20
Output Return Loss (dB, typ)	20
VSWR (max)	1.4:1
Maximum Power (W)	1.2
Diamond Heatsink	Yes

Every isolator is tested on a vector network analyzer to ensure conformity.



* WR-9 is a non-standard band. Testing was done in two bands, WR-10 and WR-8. The data was then stitched together at 90 GHz. This accounts for the discontinuity in the reflection data at 90 GHz.