

# FR188

WR-19 waveguide isolator



# MicroHarmonics

Superior mm-Wave Components

25-400 GHz

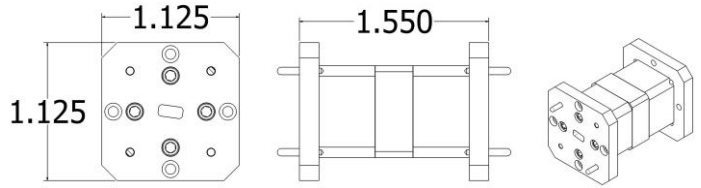
## Specifications

Flange	WR-19
Frequency (GHz)	40-60
Insertion Loss (dB, typ)	0.7
Insertion Loss (dB, max)	1.5
Isolation (dB, typ)	25
Isolation (dB, min)	17*
Input Return Loss (dB, typ)	20
Output Return Loss (dB, typ)	20
VSWR (max)	1.5:1
Maximum Power (W)	3.4
Diamond Heatsink	Yes

Test data measured and synthesized using WR-28 and WR-15 extenders with tapers

\*Isolation 15 dB min below 43 GHz.

Every isolator is tested on a vector network analyzer to ensure conformity and the test data is provided.



- ◆ Anti-cocking waveguide flanges
- ◆ Comprehensive test data
- ◆ Lowest insertion loss
- ◆ High isolation
- ◆ Compact size
- ◆ Diamond heatsinks
- ◆ Resist stray magnetic fields
- ◆ Internal waveguide screw access

